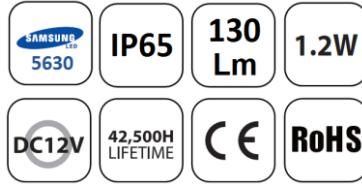


## THOR 3 1.2 POWERFUL & BRIGHT

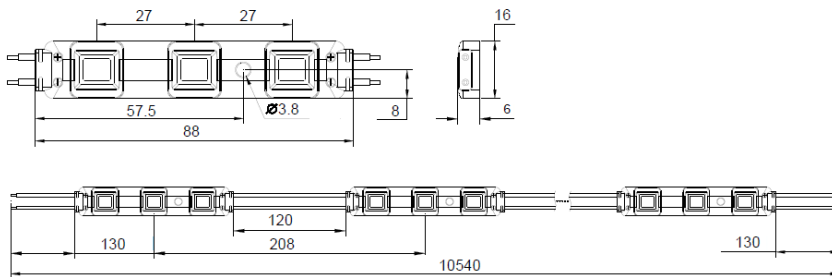


### BEST FEATURES

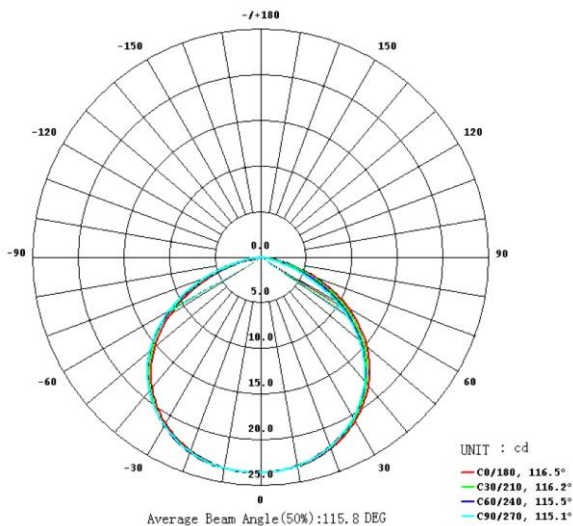
- DESIGNED TO BRING **MAXIMUM BRIGHTNESS** TO **LARGE SIZE APPLICATIONS**
- **CONSTANT CURRENT** DRIVING MODE
- **ALUMINUM PCB** FOR BETTER HEAT DISSIPATION
- MODULE PITCH IS **208 mm ON CENTERS**
- LEDs HAVE **SPECIAL PROTECTION** COVERS
- **IP65** INGRESS PROTECTION
- **5 YEARS** WARRANTY @ L70

RECOMMENDED DEPTH FOR CHANNEL LETTERS ..... 150 mm – 300 mm  
 RECOMMENDED DEPTH FOR CHANNEL LETTERS ..... 150 mm – 300 mm

### DIMENSIONS: units in mm THOR 3L



### INTENSITY DISTRIBUTION CHART



### SPECIFICATIONS\*:

Part number.....**THOR 3 (L or S)**

**S – square shape**

**L - rectangular shape**

Input voltage.....12V DC  
 Power consumption (typical).....1.2 Watt  
 Drive current.....100 mA  
 LED package.....5630  
 Housing.....PVC

Lm per module (typical).....125 lm  
 Viewing angle .....115°  
 CRI (minimal).....80

Available colors  
 Daylight white.....7,100 K

Max. allowed quantity in series.....**25 pcs**

Ingress protection.....IP 65  
 Operating temperature .... - 25°C to +60°C

Meets the following standards:

EN 55015:2006+A1+A2  
 EN 61547:2009;  
 EN60598  
 RoHS;  
 TUV EN60598-1:2008+A11 (IP TEST)

Packaging

Anti - static bag .....100 pcs  
 Master box .....1,200 pcs  
 Master box G.W. .... 17,0 kg

\*Technical data is subject to change without notice

Latvia  
 SIA "TAMARS" (office & warehouse)  
 Reģ. Nr.: 43603036217  
 Adrese: 20 Braslas iela, Offis 115  
 Rīga, LV-1084, Latvija  
 Tel.: +371 67040635  
 E-mail: info@ledunicom.lv  
 www.ledunicom.lv

Belarus  
 KIMIX LTD. (office & warehouse)  
 VAT No. 100006365  
 Legal address: 15 Zhilunovich str. off. 310  
 Minsk, BY-220026, Belarus  
 Tel.: +375 172950901  
 E-mail: info@kimix.by  
 www.kimix.by

Russia  
 ООО «ХЕЛИОС ЛЕД»  
 VAT No. 6732077309  
 Legal address: 21A Bagration str.  
 Smolensk, RU- 214025, Russia  
 Tel.: +79267581371  
 E-mail: Yurchenko@helios-led.com  
 www.helios-led.com